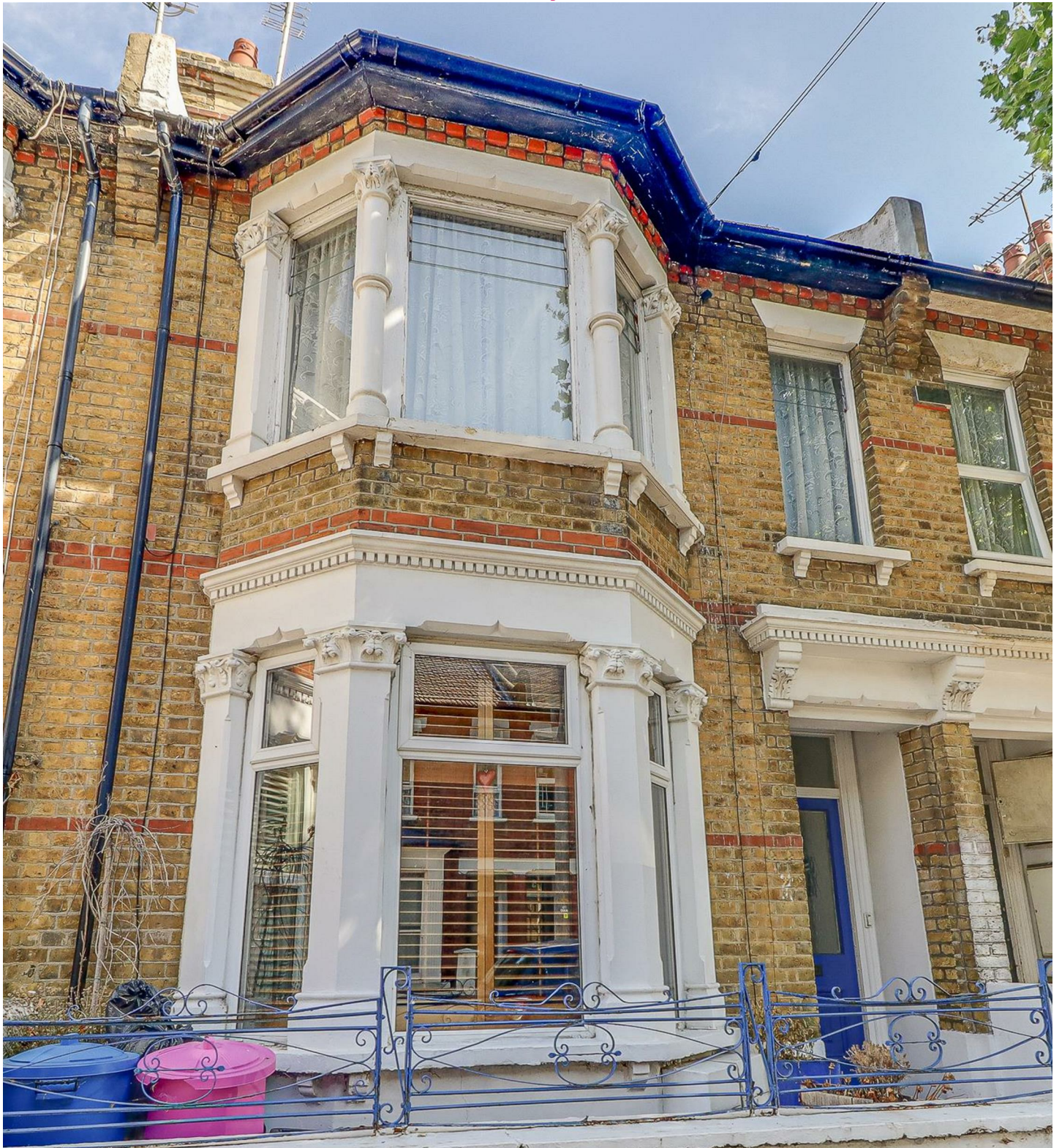


bear

Estate Agents



Ashburnham Road

Southend-on-Sea

£140,000

Offers Over



Ashburnham Road

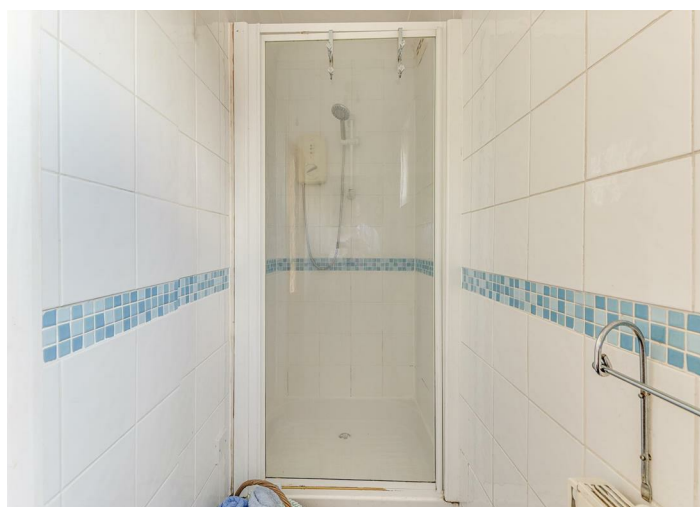


Description

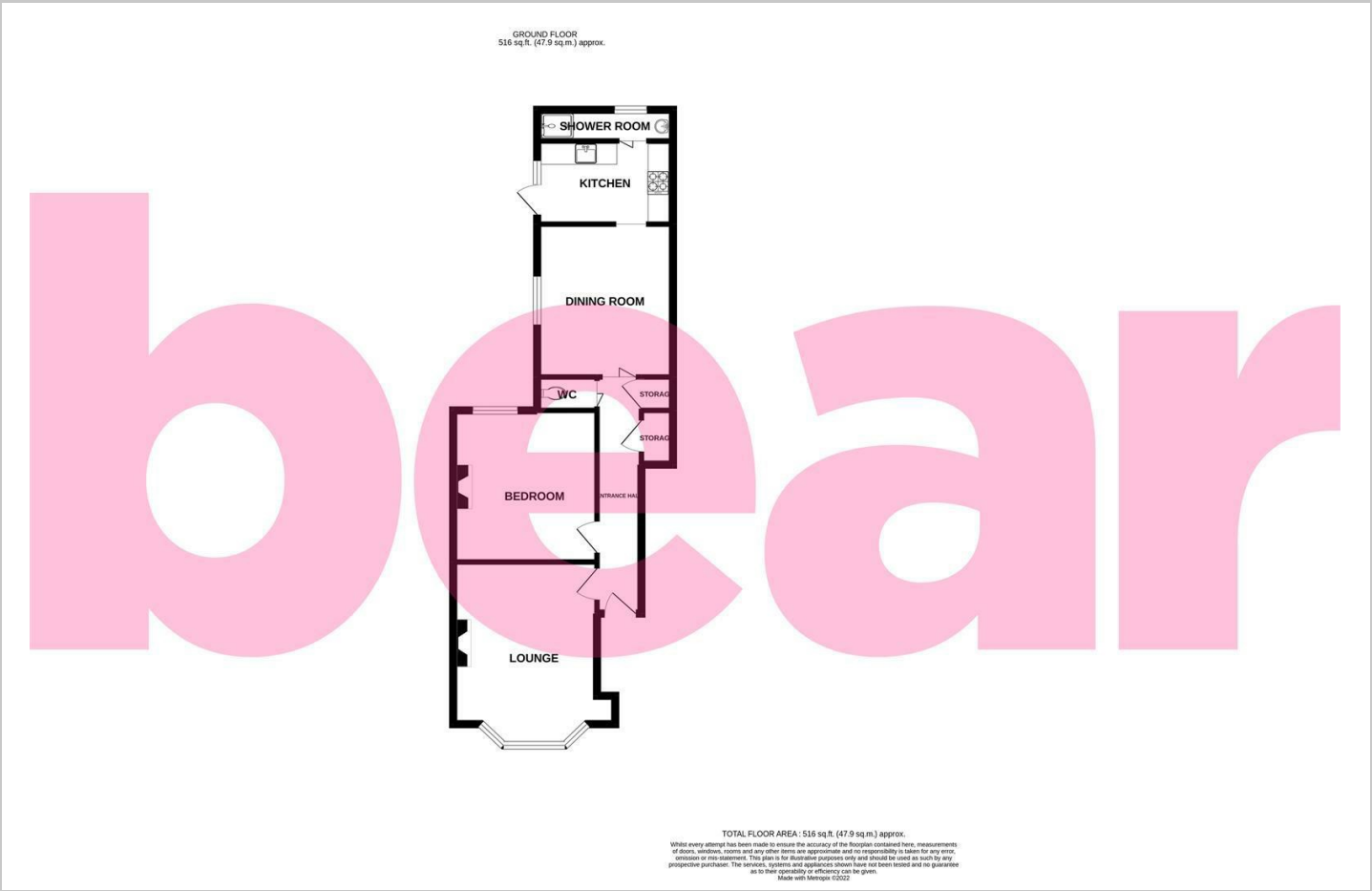
* No Onward Chain * Cash Buyers Only due to a low remaining lease term (64 Years) * Spacious one bedroom ground floor flat offering two reception rooms, well presented living space and direct access to a shared rear garden. Situated in a central location within walking distance of Southend town centre, seafront and rail stations.

- No Onward Chain
- Bay Fronted Lounge with a Feature Fireplace
- Kitchen
- Shower Room and a Separate WC
- Double Glazing
- Ground Floor Flat
- Dining Room
- One Double Bedroom
- Shared Rear Garden
- Gas Central Heating (New Boiler Installed in 2021)

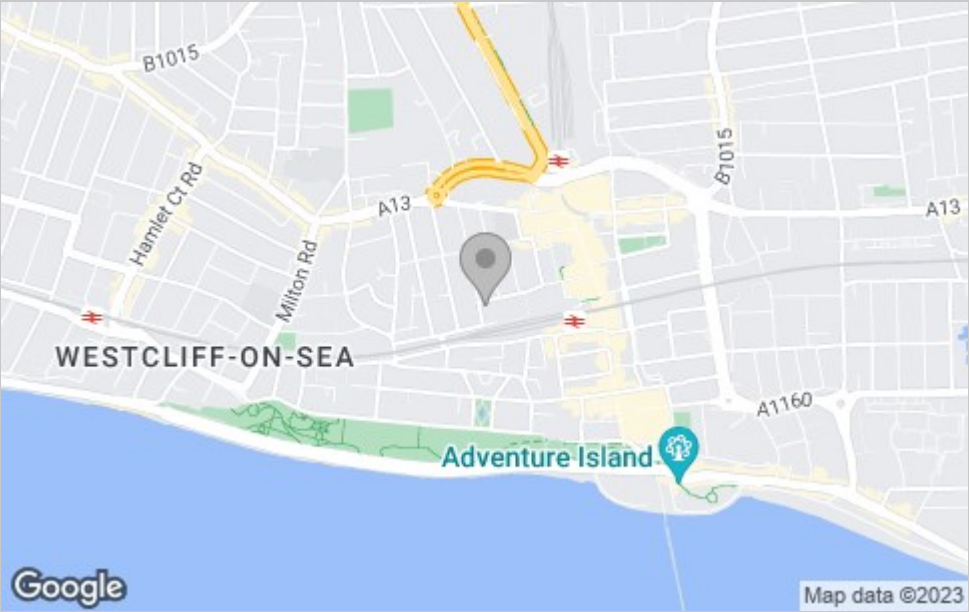




Floor Plan



Area Map



Viewing

Please contact our Southend-on-Sea Office on 01702 811211 if you wish to arrange a viewing appointment for this property or require further information.

These particulars, whilst believed to be accurate are set out as a general outline only for guidance and do not constitute any part of an offer or contract. Intending purchasers should not rely on them as statements of representation of fact, but must satisfy themselves by inspection or otherwise as to their accuracy. No person in this firms employment has the authority to make or give any representation or warranty in respect of the property.

Beech House, 1 Journeymans Way, Temple Farm Industrial Estate, Southend-on-Sea, Essex, SS2 5TF

Office: 01702 811211 info@bearestateagents.co.uk <https://www.bearestateagents.co.uk>

Energy Efficiency Graph

